



mirror | television | light

put
yourself
in the
picture

mirage
wisage
by TileVision®

the mirror that's also a television

Seeing is believing.

Introducing Mirage by TileVision®, a fully functioning digital television one minute, and a high quality illuminated mirror the next. Or at the same time if you prefer.

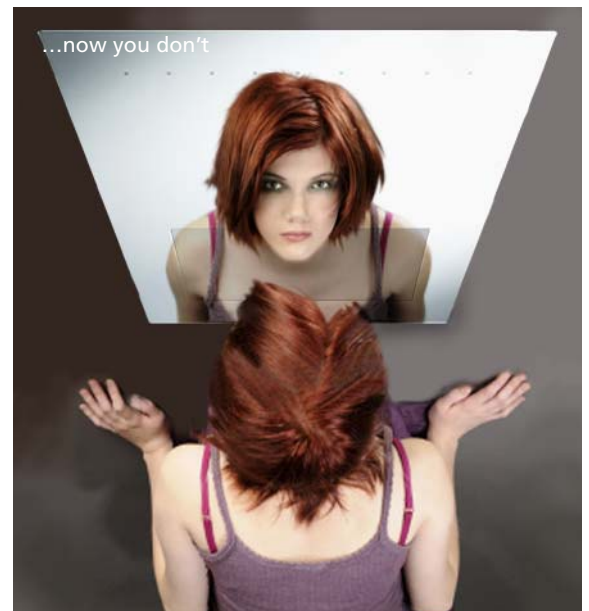
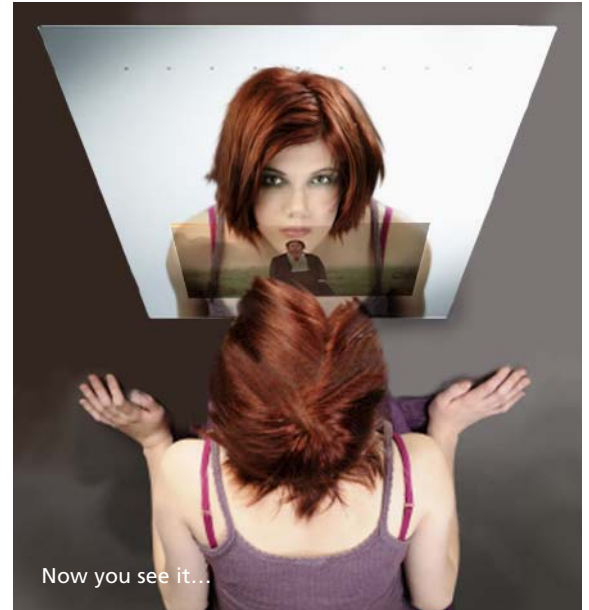
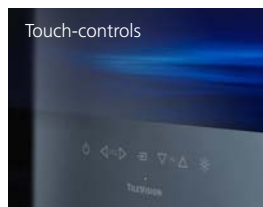
Whether you're rushing to get ready for work and you need to check the news, travel or weather, or you're preparing to go out for the evening and want to catch the latest drama, Mirage by TileVision® delivers crystal clear images on its built-in 19" LCD screen, so you won't miss a thing.

And it doesn't just look great, it sounds perfect too, with a transducer speaker system built in to deliver crisp, high fidelity audio.

Even if things are getting a little steamed up in the bathroom, Mirage by TileVision® keeps its cool and eliminates any condensation using its 6mm heated glass.

The TV screen is conveniently positioned at the bottom of the mirror, and when turned off provides a seamless reflective surface that blends unobtrusively into any interior setting.

Mirage by TileVision® is the ultimate statement of style *and* substance... for the complete picture visit www.tilevision.tv or call us on 0870 871 0111.





With a total depth of only 50mm, the standard 19" unit is perfect for mounting above a bathroom hand basin



Key features

Built-in LED lighting

DVB-T digital tuner receives all free-to-view television and radio

Digital text & interactive data services (MHEG-5) via the red button

Perfect television picture from high brightness, high contrast LCD screen

Wide viewing angles ensure high picture quality

2 x integral Gel Audio™ transducer speakers for a through-glass quality sound

Analogue tuner with Teletext and FastText

Widescreen 16:9 TFT LCD screen

HDMI connector for High Definition (HD) input plus SCART, Component, PC, Composite and S-Video

Independent television and LED lighting switching

Built-in Sky™ Remote Control Link to control the satellite receiver via the coaxial aerial cable

RS-232, RJ12, and 3.5mm jack sockets for infrared in and out to allow interface with external equipment (DVD, STB etc)

Waterproof remote control with self-adhesive holder

How it works

Mirage by TileVision® is a completely independent 19" digital television built into a mirror with LED lighting.

The mirror is made from 6mm toughened safety glass and the screen area stays clear of condensation when the television is on, making it perfect for use in high humidity areas such as bathrooms.

All functions, including set up and tuning, are performed using the waterproof remote control, and for maximum convenience there are also touch controls sited below the LCD screen.

As well as receiving all free-to-view digital TV and radio with digital text, Mirage by TileVision® is fully compatible with Sky™ Remote Link, multi-room AV systems and hotel television networks.

Specifications

External dimensions		600mm (w) x 800mm (h) x 50mm (d)
Weight		26kg (57.3lb)
Power	AC/DC adaptor	AC 100-240v, 50/60 Hz/12 VDC/5A adaptor
	Consumption	Max. 50w; standby below 3w
System	Analogue	PAL-BG; I; DK/SECAM-BG; DK; L19"
	Digital	DVB-T (MHEG-5); MPEG-2 decoding
TV	Programme	VHF 2-13; UHF 21-69; Cable S1-S4 FVS 100 programme (analogue)
LCD	Size	19" (480 mm) diagonal; widescreen (16:9)
	Resolution/type	WXGA (1440 x 900) a-si TFT active matrix
	Brightness	300 cd/m2
	Contrast ratio	1,000:1
	Viewing angle	85°/85°/80°/80° (L/R/U/D)
	Colour depth	16.77 million colours (6 bit + Hi-FRC)
	Response time	5 ms
Audio	Output	3w + 3w RMS
	System	Nicam; A2 Stereo
Connections		EURO-SCART (Full); HDMI; S-Video Component & Composite Video; Audio L/R; PC Audio In; Audio Out (Headphones); Speakers; Antenna/Tuner (Co-Axial)
Control		RS-232 Port for Home Automation Systems; Infrared Link In & Out to interface with external equipment; RJ12 Port for Interactive Hotel TV System integration; Sky™ Remote Link to control a Sky™ box via the TileVision®
Features		Auto & Manual Programme; Aspect Ratio Control; Picture & Sound Memory; Teletext TOP/FLOP/MHEG-5 Teletext; Quick View; Real Time Clock
Accessories		Waterproof R/C with Holder; Standard R/C; Installation/Operating Instructions; Power Cord; DC Adaptor; Mounting Frame

Mirage by TileVision® is available from stock at the standard size of 600mm (w) x 800mm (h). Custom sized units can be manufactured to special order for hotel or property development projects. Please contact us for information on available sizes and minimum order quantities.



Lower Healey Business Park | Froom Street | Chorley | Lancashire | UK | PR6 9AR
Tel: 0870 871 0111 | Fax: 0870 871 0112 | Email: sales@tilevision.tv | Web: www.tilevision.tv

Mirage by TileVision® is designed & manufactured by Porter Lancastrian Limited
Design & specifications are subject to change without notice | Some TileVision® pictures are simulated | E & O E